



Traceability Based Technology (TBTs) program in MDPI

Stephani Mangunsong



BACKGROUND ON TRACEABILITY

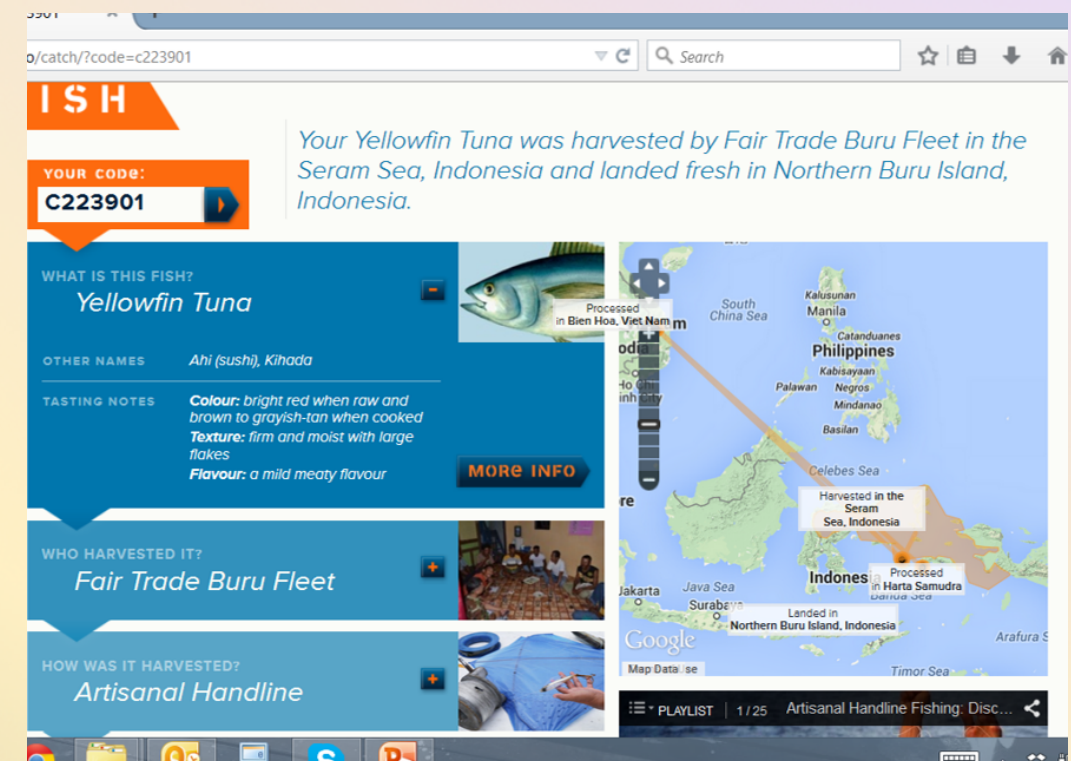


2012- Now

ENUMERATION PORT SAMPLING
(IFISH)

2014-2016

- Improving Fisheries Information and Traceability for Tuna (IFITT) project
WUR, ThisFish
- Develop FT COC on the field





2015 – 2017

The Technology innovations towards sustainability in Indonesia's tuna supply chains / Traceability Based on technology (TBT)

Wageningen, Dalhousie, IPB, Anova, Harsam, ThisFish

2017 -Now

- Continue working on TBTs
- Develop app for port sampling
- Develop software solution for processor





TRACEABILITY BASED TECHNOLOGY (TBTs) IN SMALL SCALE TUNA FISHERIES





USAID
FROM THE AMERICAN PEOPLE

TBT UNDER USAID OCEANS PROJECT

AUGUST 2017- AUGUST 2018





USAID
FROM THE AMERICAN PEOPLE

01

Level Vessel /Fisherman (on the sea)



1. Support Vessel registration



**Pendaftaran Kapal Ikan
Skala Kecil di Manado**

Dokumen untuk Kapal Perikanan Skala Kecil :
1. Pas Kecil (diurus di KSOP Kota Manado)
2. BPKP (diurus di Dinas Kelautan dan Perikanan Kota)

Berkas yang diperlukan untuk mendaftarkan Pas Kecil :

1. Surat Permissão Pengukuran
2. HTP Pemilik Kapal dan Pengurus
3. Surat Keterangan Tulang dari Kelurahan dilampirkan Camat bermaterai 6000
4. Surat Keterangan Hak Milik Kapal dari Kelurahan dilampirkan Camat bermaterai 6000
5. Surat Kuasa dari Pemilik Kapal ke Pengurus (Per legal)
6. Biaya untuk Ahli Ulun dan Marine Officer dari HSOP (Transportasi dan Honorarium) Rp. 600.000 / hari untuk 5 orang petugas

Berkas yang diperlukan untuk mendaftarkan BPKP :

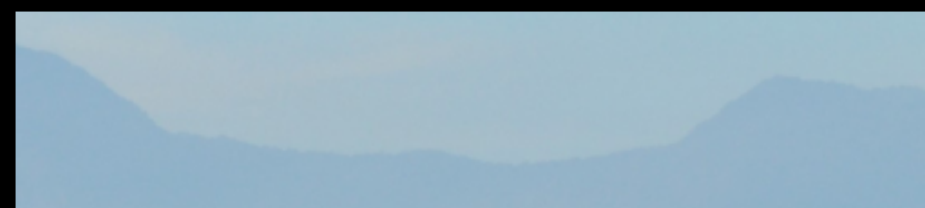
1. Surat Permissão pendaftaran EFIP
2. Fotolepi Pas Kecil dan Sertifikat Kelengkapan Kapal dari HSOP
3. Surat Keterangan kepemilikan kapal dari Kelurahan Camat
4. Foto Kapal
5. Fotolepi HTP Pemilik Kapal

Untuk melengkapi Form Surat Permissão, Surat Keterangan Tulang, Surat Keterangan Hak Milik Kapal dan Surat Kuasa bisa menghubungi Petugas Pendaftaran Kapal MDPI

Nomor yang bisa dihubungi :
KSOP Kota Manado : Ibu Majumi 081340716607
DKP Kota Manado : Ibu Reni Lumintang 081340460296

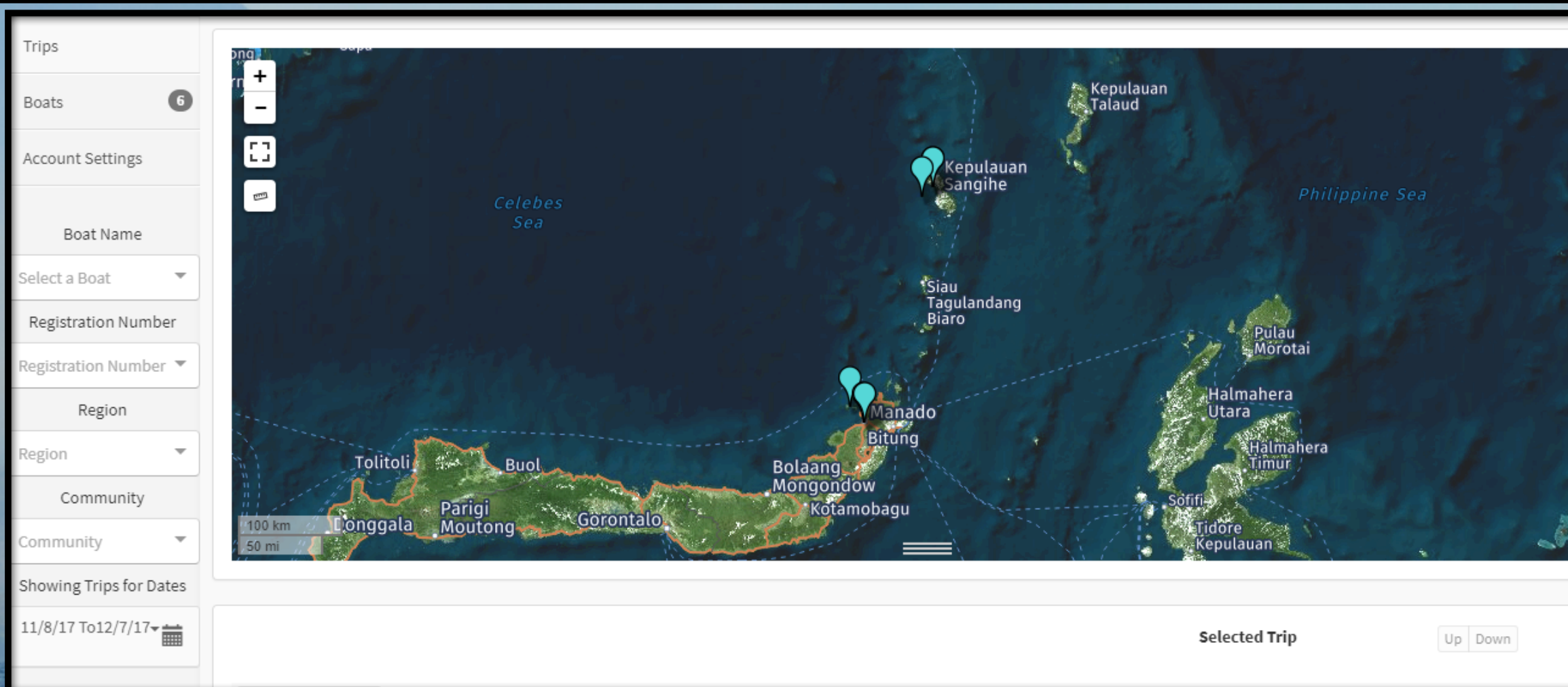
Petugas Pendaftaran Kapal MDPI :
Monang Simanjuntak (0863844037710)

 Yayasan
Masyarakat dan Perikanan
Indonesia





2. Deploy Pelagic Data System





3. Deploy Electronic Monitoring (Onboard camera)





4. Food safety and fish Handling Training



02

Level Supplier/Middleman (on the Landing site)



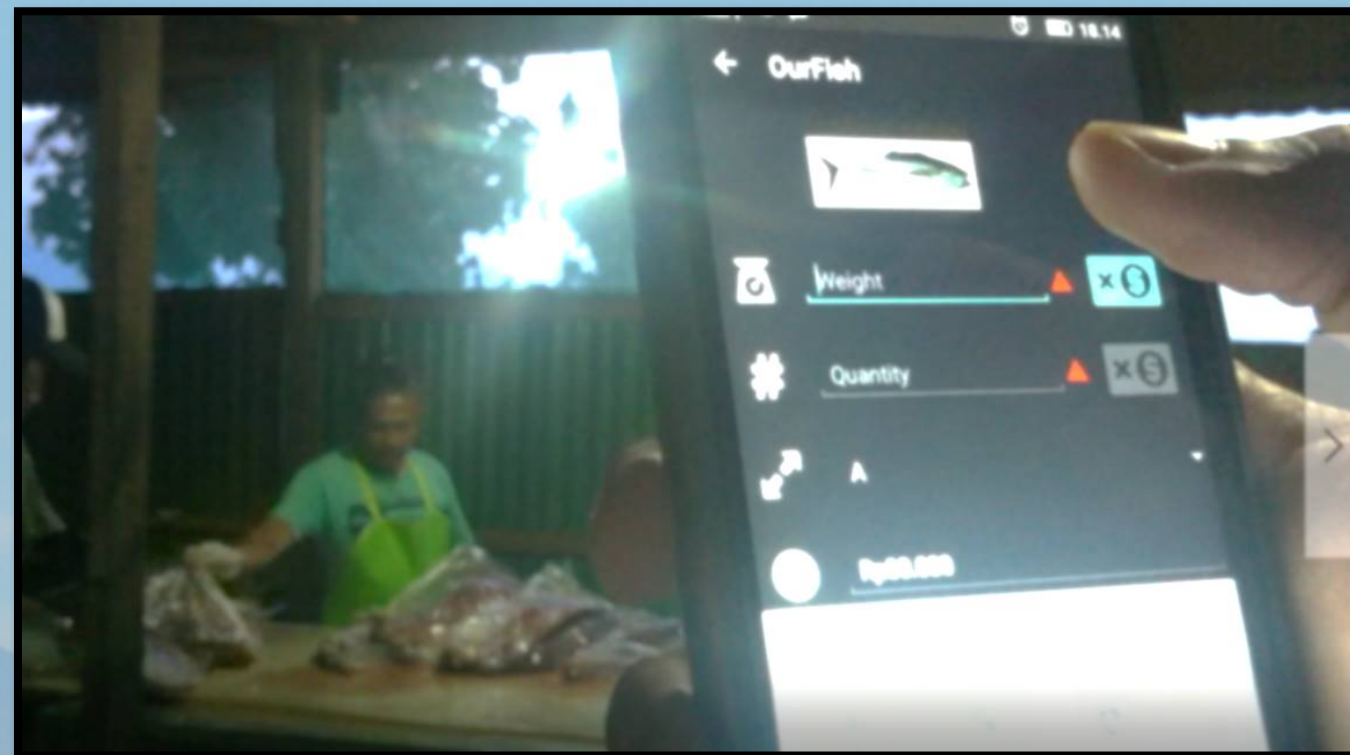


1. Electronic Enumeration-Ifish Apps





2. Support Development of Supplier apps (Trafiz)





03

Level Processor (on the land)





1. Deploy TraceTales





Software solution for seafood processors capturing, storing,
and managing product data electronically

Advantages

1

Reduce data errors

2

Reduce Paper

3

Improved traceability and inventory tracking

4

Real-time data analytics on yields and productivity

5

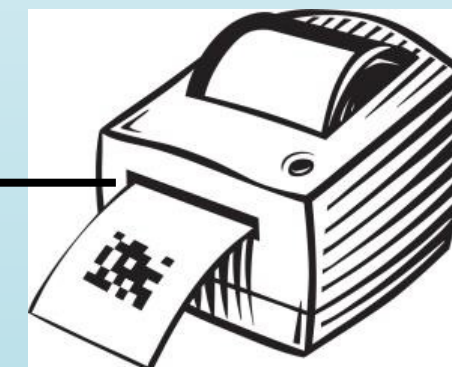
Electronic data sharing and interoperability

6

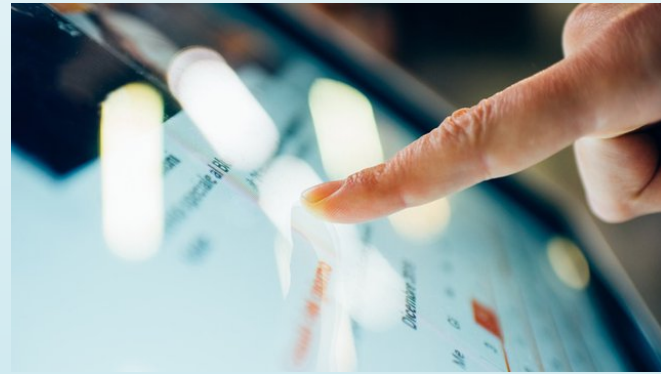
Easy to customized

7

Affordable



Data Entry Mechanism



USER FRINDLY, TOUCH SCREEN



CAPTURING VALUE
FROM WEIGHT SCALE
INDICATOR

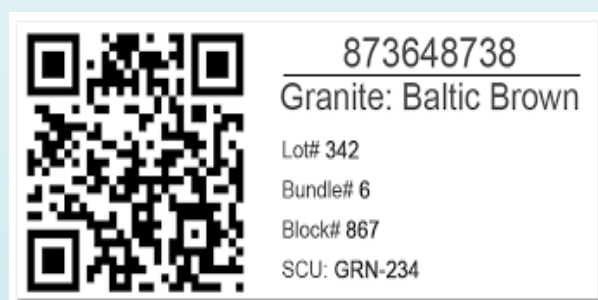


QR CODE SCANNER



MANUAL ENTRY

Output Result



QR Code label

- Label after processing and for boxing



Print out report

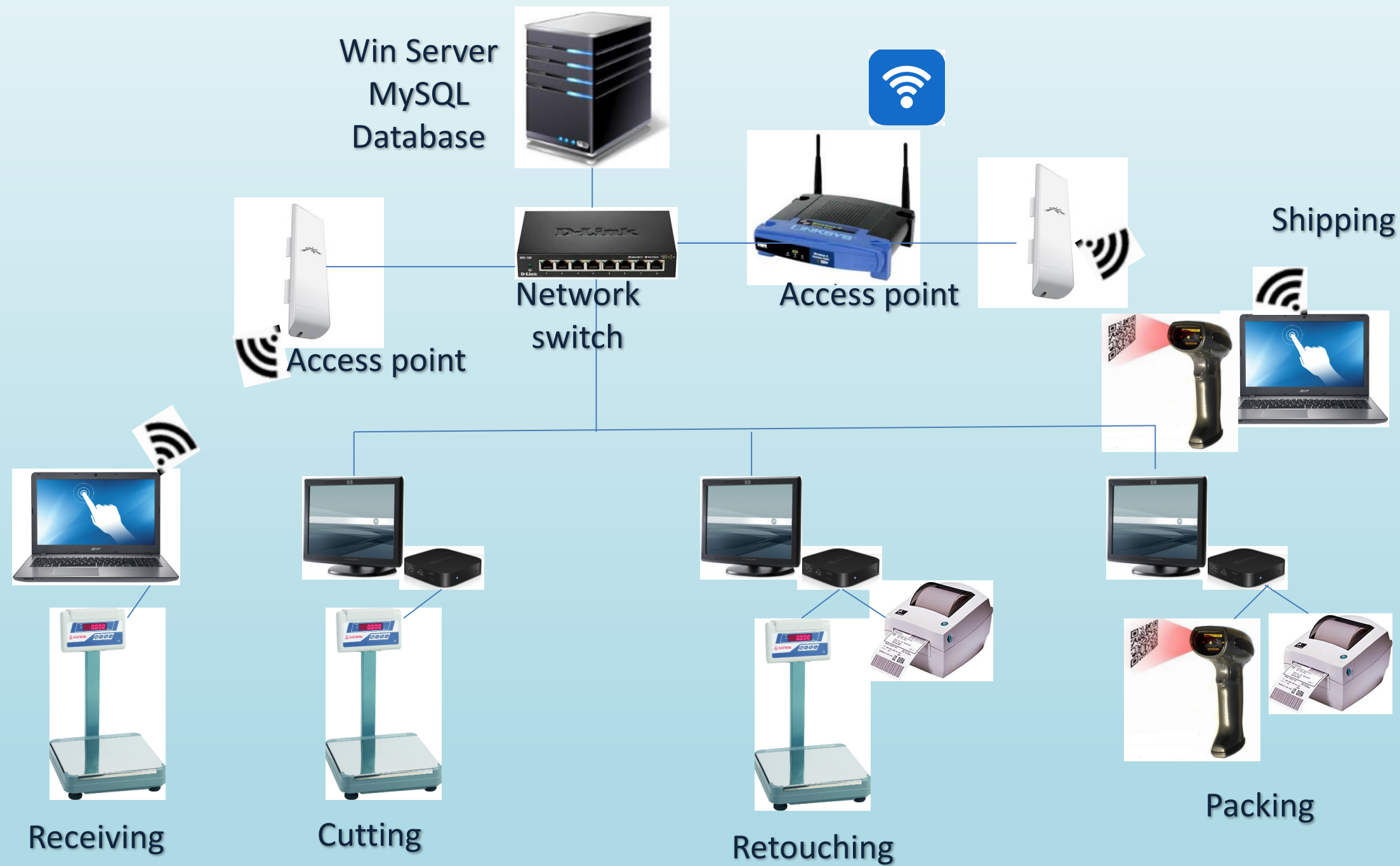
-Invoice and Packing Slip



CSV File

Export CSV file

Network Architecture



IMPLEMENTATION PROCESS



- Flow Process
- Documentation
- Electricity
- Internet connection
- Meeting with company team

- Customized software based on assessment
- Stakeholder review

Install hardware
Install software

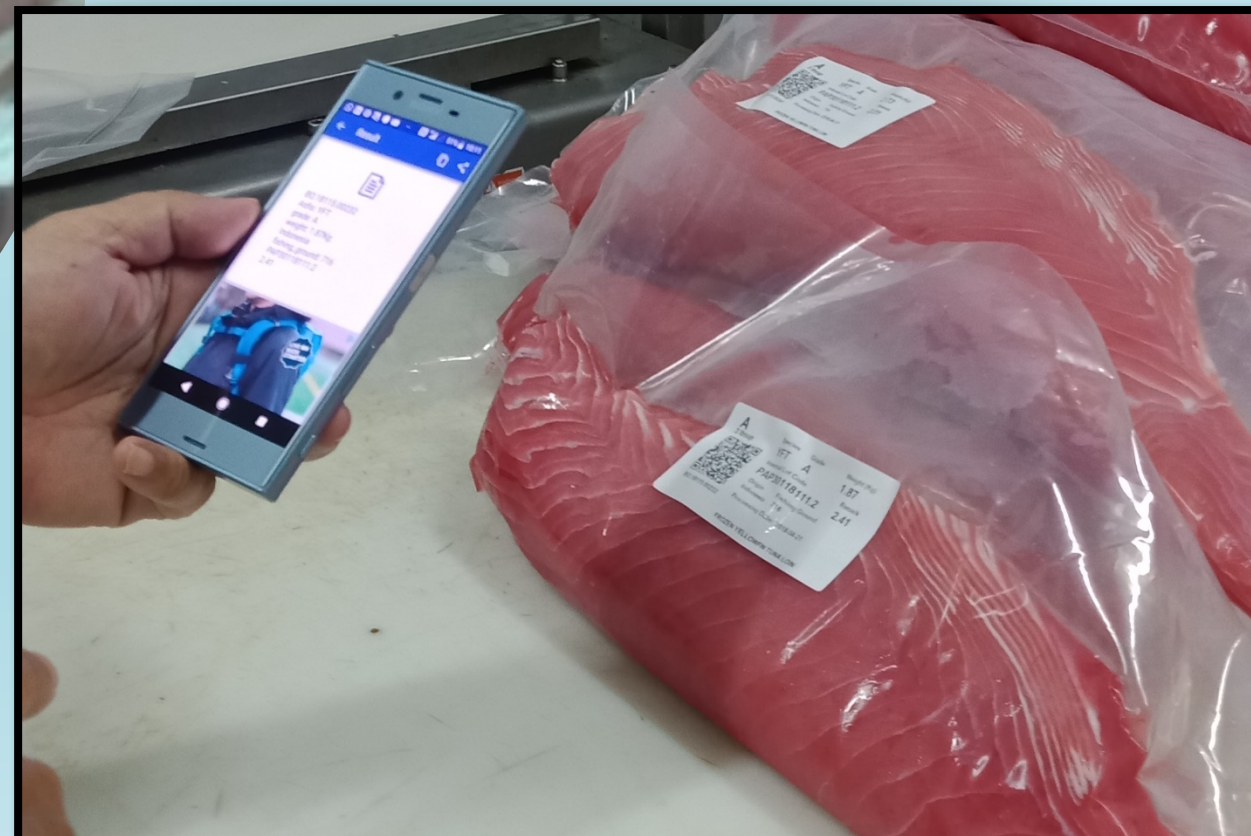
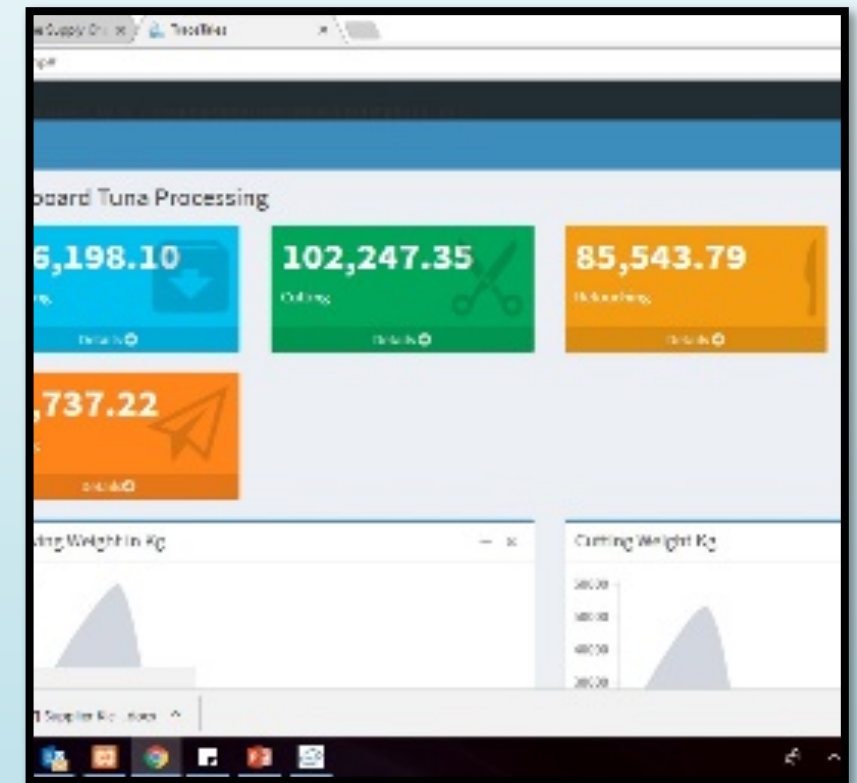
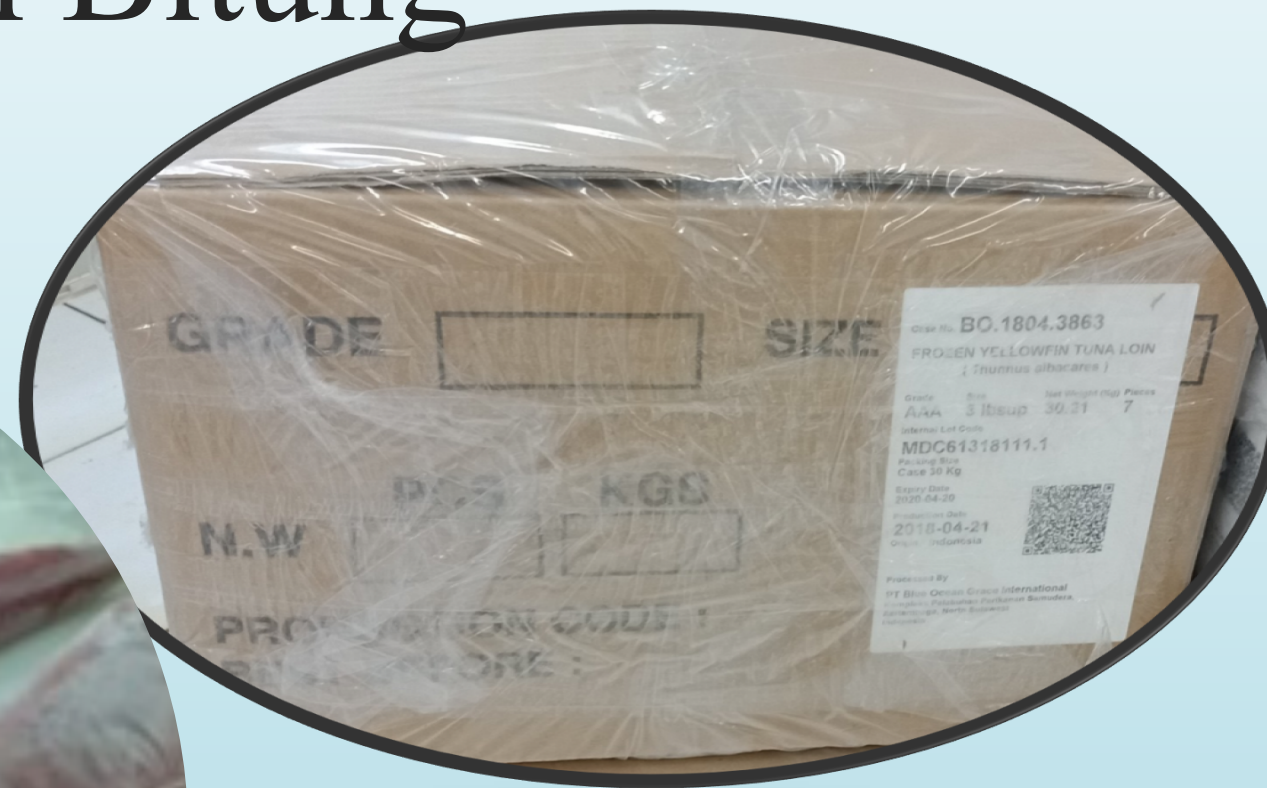
- TraceTales function
- Entering data
- Problem solving
- Analising data
- Monitoring Hardware and software

Customer support and monitoring during implementation.
(Software, Hardware, feedback)

TraceTales in Bitung



TraceTales in Bitung



THREE MONTHS IMPLEMENTATION RESULTS



- REDUCE NOISE DURING PRODUCTION
- EFFECTIVE FOR CAPTURING DATA
- REDUCE PACKING TIME
- ABLE TO PRINT INVOICE AND PACKING LIST AFTER LOADING
- SEND DATA TO BUYER QUICKLY
- SOME STAGE NOT USING PAPER TALLY ANYMORE
- EASIER FOR CHECKING THE INVENTORY
- ABLE TO ANALYSE YIELD PRODUCTION QUICKLY

Lesson Learn



- Previous experiences for implementing TBT support better development of the software
- People very welcome with technology
- Technology create effectivity and efficiency withing fish production and also very usefull for traceability
- Some consideration for using technology :
 - Electricity
 - Internet
 - Hardware cost (incl maintenance)
 - Availability hardware in local country
 - Skill of the people

A close-up photograph of a smiling fisherman with dark skin, wearing a grey long-sleeved shirt with red and white stripes on the sleeves and a blue baseball cap. He is holding a large, silvery fish with a blue stripe along its side. The background is a bright, slightly hazy sky.

Thank you for listening!

www.mdpi.or.id

Info@mdpi.or.id

stephani@mdpi.or.id

wildan@mdpi.or.id

